

R-4990 Airport, Port & Heavy Industrial Series Bolted Trench for Extra Heavy Duty Applications

These trench drains are capable of supporting the heavy wheel loads of today's commercial environments. For larger trench widths or greater loading requirements, please contact our Product Engineering Department.
Grates are bolted to gray iron frames.

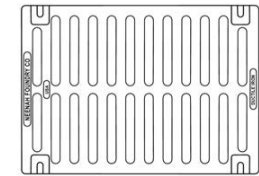
Suitable for aircraft loading per AC150/5320-6D.
Refer to R-4990 Series for installation information.

Catalog No.	Dimensions in inches			Grate/Cover Material
	A	B	C	
R-4990-AA	8	2	6	Gray Iron Class 35
R-4990-BA	10	2	8	Gray Iron Class 35
R-4990-CA	12	2	10	Ductile Iron
R-4990-DA * **	14	2	12	Ductile Iron
R-4990-EA *	17	2	15	Ductile Iron
R-4990-FA *	20	2	18	Ductile Iron
R-4990-HA *	26	2	24	Ductile Iron
R-4990-KA2 *	34	2	31	Ductile Iron
R-4990-OA *	51	2	48	Ductile Iron

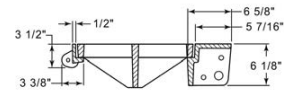
* Type D solid cover available.

** Type C grate available.

Ductile Iron furnished in Grade 80-55-06.

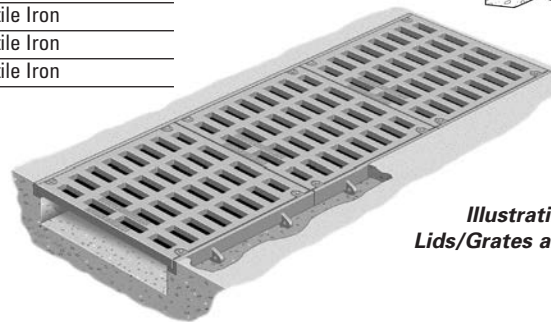
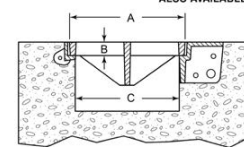


TYPE 'A'
GRATE OPENINGS



STANDARD
TYPE 'X'
FRAME

ALTERNATE
R-4993 TYPE T
FRAME SHOWN
R-4994 TYPE S FRAME
ALSO AVAILABLE



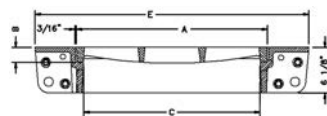
**Illustrating R-4990-HA
Lids/Grates are bolted to frame.**

R-4993 and R-4994 Superior Durability Frame Series for Airports, Ports, Industrial Sites and Roads

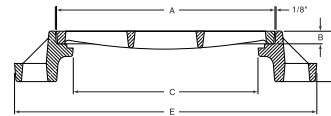
Superior Duty Frames

Designers have the option to utilize either of these new frames in locations where it is deemed that traditional angle frames could break loose from concrete due to extraordinary conditions. A few examples of such conditions are: braking forces of ultra heavy vehicles; torsional forces due to turning aircraft and container port vehicles; heavy airfield and industrial applications; highway tunnels; certain highway applications.

Neenah offers two frame choices each with its own unique benefits. For complete information, please refer to the R-4993 and R-4994 Series in the Trench section of our catalog.



Illustrating R-4993 Type T Frame



Illustrating R-4994 Type S Frame

Type T Catalog No.	Type S Catalog No.	Dimensions in inches								
		A	B	Type T C	Type T E	Type S C	Type S E	Type A	Type C	Type D
	<i>Airport, Port, Industrial Loads</i>									
R-4993-AAB	R-4994-AAB	8	2	6	19 1/4	4	18	x		
R-4993-BAB	R-4994-BAB	10	2	8	21 1/4	6	20	x		
R-4993-CAB	R-4994-CAB	12	2	10	23 1/4	8	22	x		
R-4993-DAB	R-4994-DAB	14	2	12	25 1/4	10	24	x	x	x
R-4993-EAB	R-4994-EAB	17	2	15	28 1/4	13	27	x		x
R-4993-FAB	R-4994-FAB	20	2	18	31 1/4	16	30	x		x
R-4993-HAB	R-4994-HAB	26	2	24	37 1/4	22	36	x		x
R-4993-KAB	R-4994-KAB	34	2	32	45 1/4	30	44	x		x
R-4993-OAB	R-4994-OAB	51	2	49	62 1/4	47	61	x		x

x - Indicates availability